

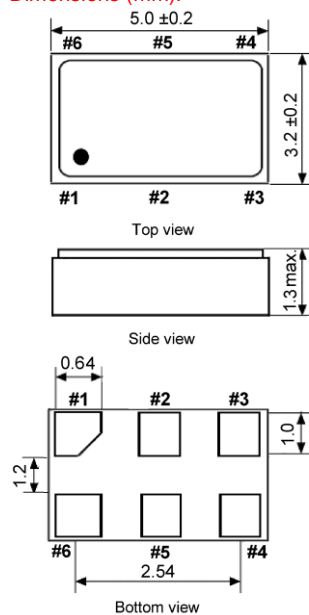


LVDS VCXO SMD-version

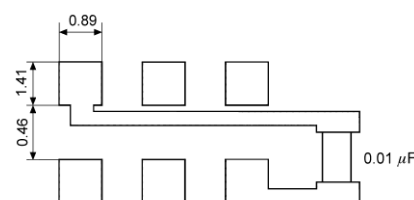
+2.5 / +3.3 V

part no.	12.xxxxx
model	KXO-V62
frequency range	20.0 ~ 700.0 MHz
frequency stability incl. temperature stability input voltage and load stability, aging	±50 ppm standard ±25 ppm available
operating temperature	-10° ~ +70°C standard -40° ~ +85°C available
storage temperature	-40° ~ +125°C
symmetry	50 % ±5 %
rise & fall time max.	0.4 ns (20 % ~ 80 % of output level)
output high level max.	1.43 V typ. ~ 1.60 V
output low level	0.90 V min. ~ 1.10 V typ.
supply voltage	+2.5V DC ±5 % or +3.3V DC ±5 %
output voltage level	V _{OL} : 0.9 V min. / V _{OH} : 1.6 V max.
supply current max.	65 mA
output load	100 Ohm (OUT – OUTN)
start up time max.	5 ms
APR (absolute pulling range) min.	±50 ppm (Vcon = +1.65 V ± 1.65 V)
frequency linearity max.	10 %
frequency slope	positive
Vcon input impedance min.	10 MOhm at DC characteristic
disable delay time/ enable delay time max.	200 ns / 4 ms
pin 1 control voltage	1.25 V ±1.05 V (1.25 V), 1.65 V ±1.35 V (1.65 V)
pin 2 function	enable input voltage
pin 2 function	enable input voltage min. 70 % V _{DD} or NC disable input voltage max. 30 % V _{DD}
output disable current (Pin #1 = VIL) max.	3.5 mA
phase jitter (12 kHz ~ 20 MHz) max.	1.0 ps RMS
typical phase noise	-125 dBc / 1 kHz -160 dBc / 10 MHz
contents of reel	1000 pcs.

Dimensions (mm):

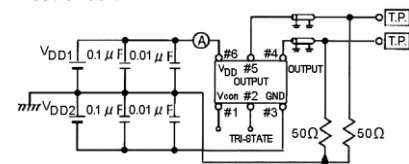


Suggested soldering pad:

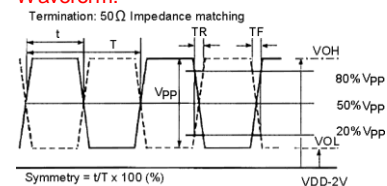


PIN	Connection
1	VC
2	"L" "H" or OPEN
3	GND
4	Z Output
5	Z C-Output
6	V _{DD}

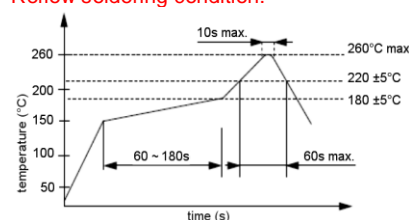
Test circuit:



Waveform:



Reflow soldering condition:



Tape specification:

