

# TCXO clipped sine wave

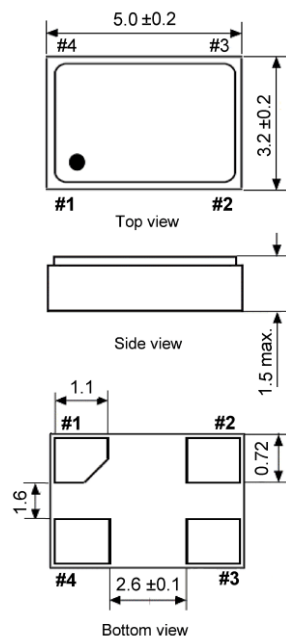
SMD-version

+3.0 / +3.3 V

Temperature Compensated Crystal Oscillator

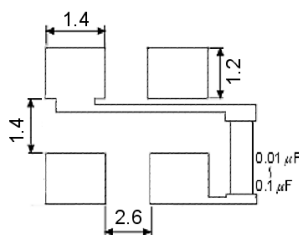
part no.		12.xxxxx
model		KXO-83
frequency range		6.0 ~ 40.0 MHz
initial frequency tolerance max.		±1.5 ppm
frequency stability	vs. temp.range	±0.5 ppm over -30°C ~ +85°C (referred to +25°C) ±1.0 ppm over -30°C ~ +85°C (referred to +25°C) ±1.5 ppm over -40°C ~ +85°C (referred to +25°C)
	vs. input voltage max.	±0.3 ppm at V <sub>DD</sub> ±5 %
	vs. load max.	±0.3 ppm ±5 %
	vs. aging max.	±1 ppm / year at +25°C
output	load	10 kOhm ±10 % // 10 pF ±10 %
	voltage min.	0.8 Vp-p at 10 kOhm // 10 pF
	waveform	clipped sine wave
operating temperature range		-30°C ~ +85°C / -40°C ~ +85°C
storage temperature range		-55°C ~ +125°C
supply voltage range		+2.5 V ~ +3.4 V
supply voltage V <sub>DD</sub>		+3.0 V DC ±5 % or +3.3 V DC ±5 %
supply current		1.2 mA typ., 2 mA max. (no load)
start-up time max.		2 ms
harmonics max.		-5.0 dBc
phase noise max.		-80 dBc / Hz at 10 Hz -110 dBc / Hz at 100 Hz -130 dBc / Hz at 1 kHz -140 dBc / Hz at 10 kHz -140 dBc / Hz at 100 kHz -145 dBc / Hz at 1 MHz
contents of reel		1000 pcs.

**Dimensions (mm):**

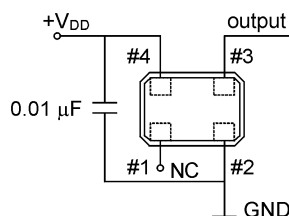


Pin	Connection
1	NC
2	GND
3	OUTPUT
4	V <sub>DD</sub>

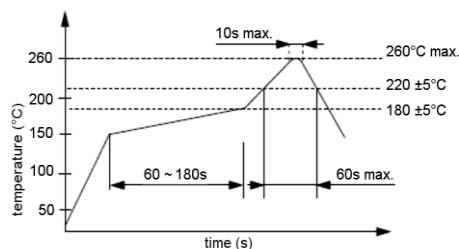
**Suggested soldering pad:**



**Test circuit:**



**Reflow soldering condition:**



**Tape specification:**

