



TCXO HCMOS

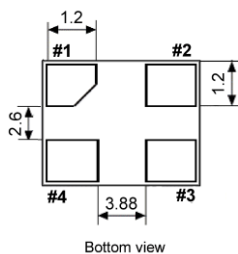
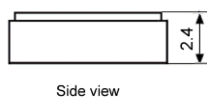
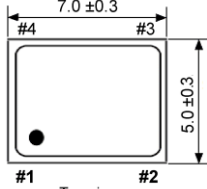
SMD-version

+2.8 / +3.3 V

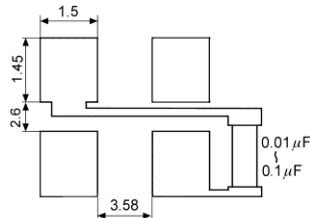
Temperature Compensated Crystal Oscillator

part no.	12.xxxxx	
model	KXO-82	
frequency range	1.200 ~ 200.0 MHz	
initial frequency tolerance max.	±1.5 ppm	
frequency stability	vs. temp.range	±1.0 ppm ~ ±3.0 ppm over -40° ~ +85°C (referred to +25°C)
	vs. input voltage	±0.3 ppm at V _{DD} ±5 %
	vs. load max.	±0.3 ppm
	vs. aging max.	±1 ppm / year at +25°C
output	load	15 pF
	waveform	HCMOS
operating temperature range	-40°C ~ +85°C	
storage temperature range	-55°C ~ +125°C	
supply voltage range	+1.6 V ~ 3.6 V	
supply voltage V _{DD}	+2.8 V DC ± 5 % or +3.3 V DC ± 5%	
supply current	10 mA typ., 20 mA max. (no load)	
start-up time max.	2 ms	
symmetry	40 % / 60 % at ½ V _{DD} level	
rise and fall time max.	10 ns (10 % V _{DD} ~ 90 % V _{DD} level)	
phase noise typ.	-80 dBc/Hz at 10 Hz -110 dBc/Hz at 100 Hz -130 dBc/Hz at 1 kHz -140 dBc/Hz at 10 kHz -145 dBc/Hz at 100 kHz -150 dBc/Hz at 1 MHz	
contents of reel	1000 pcs.	

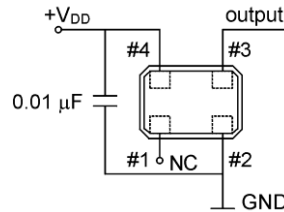
Dimensions (mm):



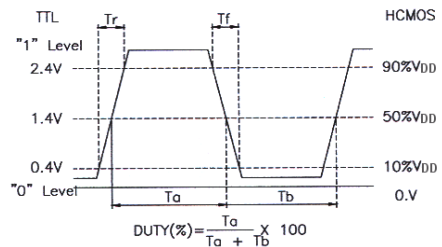
Suggested soldering pad:



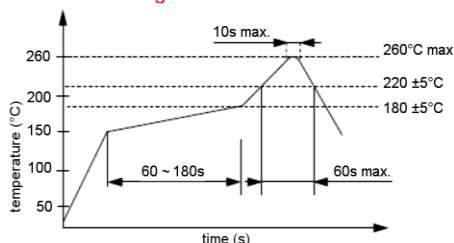
Test circuit:



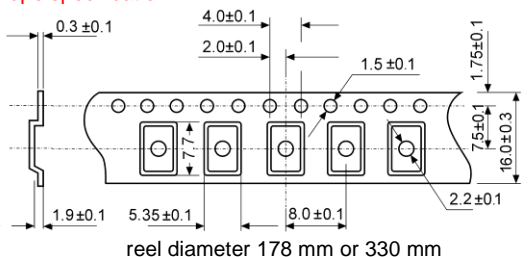
Output waveform:



Reflow soldering condition:



Tape specification:



Pin	Connection
1	NC
2	GND
3	OUTPUT
4	V _{DD}