



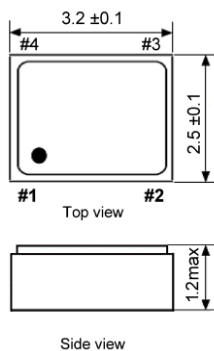
VCTCXO clipped sine wave

SMD-version +1.8 / +2.5 / +3.3 V

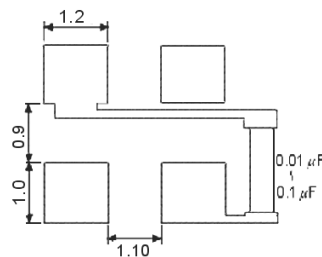
Voltage Controlled Temperature Compensated Crystal Oscillator

part no.	12.xxxxx	
model	KXO-84	
frequency range	13.0 ~ 52.0 MHz	
initial frequency tolerance max.	±2.0 ppm (after 2 reflows)	
frequency stability	vs. temp.range	±0.5 ppm over -30°C ~ +85°C (referred to +25°C) ±1.0 ppm over -30°C ~ +85°C (referred to +25°C) ±2.5 ppm over -40°C ~ +85°C (referred to +25°C)
	vs. input voltage	±0.2 ppm at V _{DD} ±5 %
	vs. load max.	±0.2 ppm
	vs. aging max.	±1 ppm / year at +25°C
output	load	10 kOhm ±10 % // 10 pF ±10 %
	voltage min.	0.8 V _{p-p} at 10 k Ohm // 10 pF
	waveform	clipped sine wave
operating temperature range	-30°C ~ +85°C / -40°C ~ +85°C	
storage temperature	-55°C ~ +125°C	
supply voltage V _{DD}	+1.8 V DC ±5 %, +2.5 V DC ±5 % or +3.3 V DC ±5 %	
supply current max.	13.0 ~ 26 MHz 1.5 mA (no load) > 26 MHz 2.0 mA (no load)	
start-up time max.	3 ms	
harmonics max.	-7.0 dBc	
frequency control voltage (VC)	1.8 V (0.9±0.9 V DC), +2.8 V or +3.3 V (½ V _{DD} ±1 V DC)	
frequency adjustment (pullability) min.	±12 ppm	
phase noise max.	-75 dBc/Hz at 10 Hz -105 dBc/Hz at 100 Hz -125 dBc/Hz at 1 kHz -145 dBc/Hz at 10 kHz -150 dBc/Hz at 100 kHz -150 dBc/Hz at 1 MHz	
contents of reel	1000 pcs.	

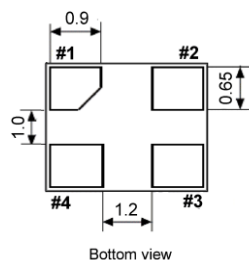
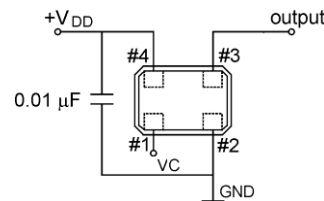
Dimensions (mm):



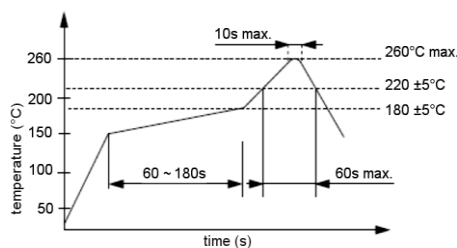
Suggested soldering pad:



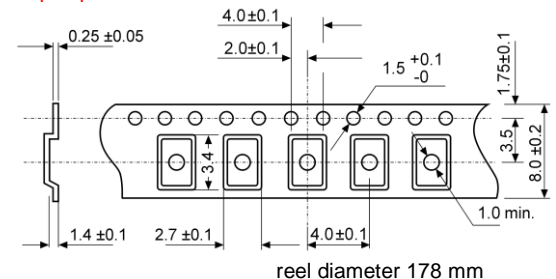
Test circuit:



Reflow soldering condition:



Tape specification:



Pin	Connection
1	VC
2	GND
3	OUTPUT
4	V _{DD}