



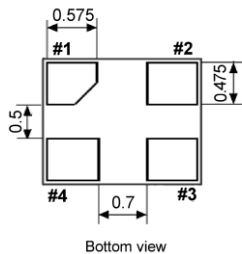
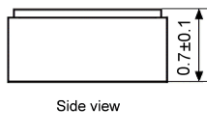
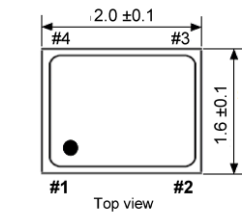
TCXO clipped sine wave SMD-version

Temperature Compensated Crystal Oscillator

+1.8 / +2.5 / +3.3 V

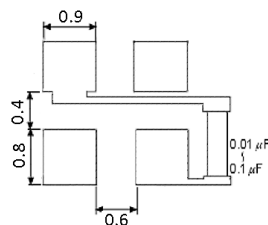
part no.	12.xxxxx	
model	KXO-81	
frequency range	13.0 ~ 52.0 MHz	
frequency tolerance max.	±2 ppm (after 2 reflows)	
frequency stability	vs. temp.range	±0.5 ppm over -30°C ~ +85°C (referred to +25°C) ±1.0 ppm over -30°C ~ +85°C (referred to +25°C) ±2.5 ppm over -40°C ~ +85°C (referred to +25°C)
	vs. input voltage max.	±0.2 ppm at V _{DD} ±5 %
	vs. load max.	±0.2 ppm
	vs. aging max.	±1 ppm / year at +25°C
output	load	10 kOhm ±10 % // 10 pF ±10 %
	voltage min.	0.8 V _{p-p} at 10 kOhm // 10 pF ±10 %
	waveform	clipped sine wave
operating temperature range	-30°C ~ +85°C / -40°C ~ +85°C	
storage temperature range	-55°C ~ +125°C	
supply voltage V _{DD}	+1.8 V DC ±5 %; +2.5 V DC ±5 % or +3.3 V DC ±5 %	
supply current max.	13.0 ~ 26 MHz 2.0 mA (no load) > 26 MHz 2.5 mA (no load)	
start-up time max.	2 ms	
harmonics max.	-7.0 dBc	
phase noise max.	-75 dBc/Hz at 10 Hz -105 dBc/Hz at 100 Hz -125 dBc/Hz at 1 kHz -145 dBc/Hz at 10 kHz -150 dBc/Hz at 100 kHz -150 dBc/Hz at 1 MHz	
contents of reel	3000 pcs.	

Dimensions (mm):

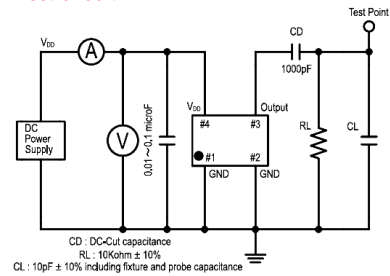


Pin	Connection
1	GND
2	GND
3	OUTPUT
4	V _{DD}

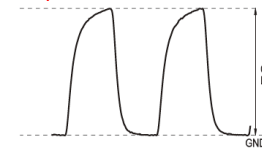
Suggested soldering pad:



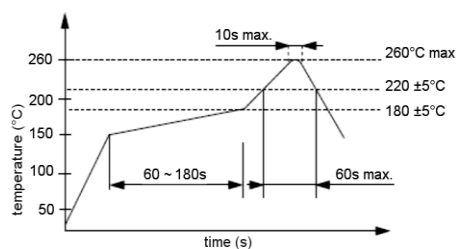
Test circuit:



Output waveform:



Reflow soldering condition:



Tape specification:

