

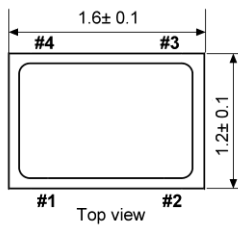


Quartz Crystal

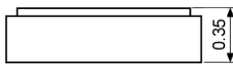
SMD-version

part no.	12.xxxxx
model	KX - 4
frequency range	24.0 ~ 80.0 MHz
mode	fundamental
operating temperature	standard -20° ~ +70°C available -40° ~ +85°C (=KX-4T); -40° ~ +105°C (=KX-4E); -40° ~ +125°C (=KX-4F)
frequency tolerance at +25°C	standard ±30 ppm; available ±10 ~ ±50 ppm
temperature tolerance at -20° ~ +70°C; -40° ~ +85°C -40° ~ +105°C -40° ~ +125°C	standard ±50 ppm; available ±10 ~ ±100 ppm standard ±100 ppm; available ±30 ~ ±120 ppm standard ±100 ppm; available ±50 ~ ±150 ppm
load capacitance C _L	standard 8 pF; available 8 ~ 16 pF
series resistance R1 (ESR) max	24.0 ~ 31.99 MHz 150 Ohm 32.0 ~ 37.99 MHz 100 Ohm 38.0 ~ 80.0 MHz 80 Ohm
aging at +25°C (first year) max.	±2 ppm
shunt capacitance C ₀ max.	3.0 pF
drive level max.	50 µW
contents of reel	1000 pcs.

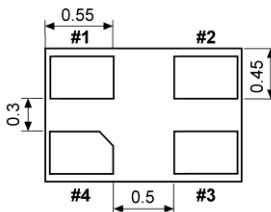
Dimensions (mm):



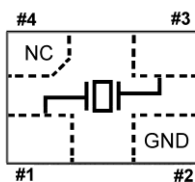
Top view



Side view

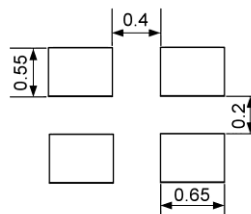


Bottom view

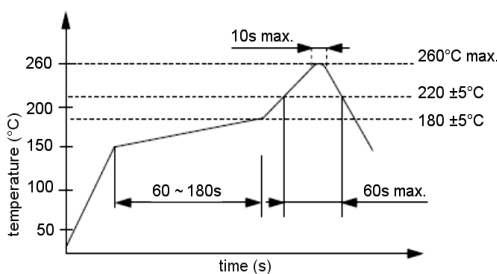


Top view connections

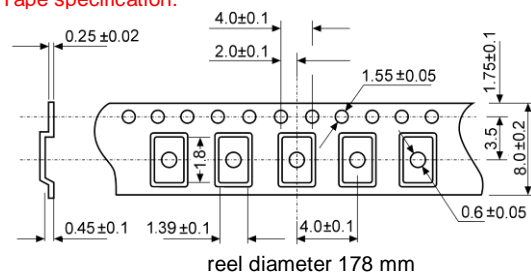
Suggested soldering pad:



Reflow soldering condition:



Tape specification:



reel diameter 178 mm