



VCTCXO clipped sine wave

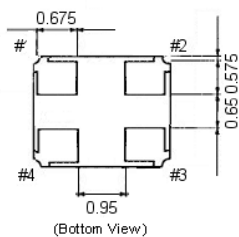
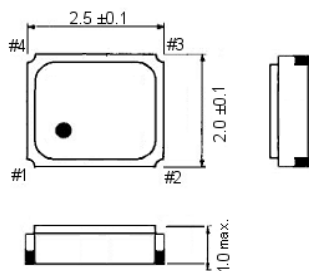
SMD-version

+2.5 / +3.3 V

Voltage Controlled Temperature Compensated Crystal Oscillator

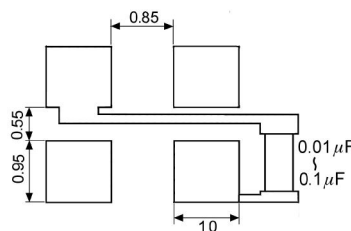
part no.	12.xxxxx	
model	KXO-86	
frequency range	13.0 ~ 56.0 MHz	
initial frequency tolerance max.	±1.5 ppm	
frequency stability	vs. temp.range	±0.5 ppm over -30°C ~ +85°C (referred to +25°C) ±2.5 ppm over -40°C ~ +85°C (referred to +25°C)
	vs. input voltage	±0.2 ppm at V _{DD} ±5 %
	vs. load max.	±0.2 ppm
	vs. aging max.	±1.0 ppm / year at +25°C
output	load	10k Ohm ±10 % // 10 pF ±10 %
	voltage min.	0.8 Vp-p at 10 k Ohm // 10 pF
	waveform	clipped sine wave
operating temperature range	-30°C ~ +85°C	
storage temperature	-40°C ~ +85°C	
input voltage V _{DD}	+2.5 V DC ±5 % and +3.3 V DC ±5 %	
input current max.	13.0 ~ 26 MHz 2.0 mA (no load) > 26 MHz 2.5 mA (no load)	
start-up time max.	2 ms	
frequency control voltage (VC)	½ V _{DD} ±1 V DC	
frequency adjustment (pullability)	±9 ppm ~ ±15 ppm	
reflow frequency change	±1.0 ppm after reflow (at +25°C ± 2°C)	
phase noise max.	-80 dBc/Hz at 10 Hz -110 dBc/Hz at 100 Hz -130 dBc/Hz at 1 kHz -145 dBc/Hz at 10 kHz -150 dBc/Hz at 100 kHz -150 dBc/Hz at 1 MHz	
contents of reel	1000 pcs.	

Dimensions (mm):

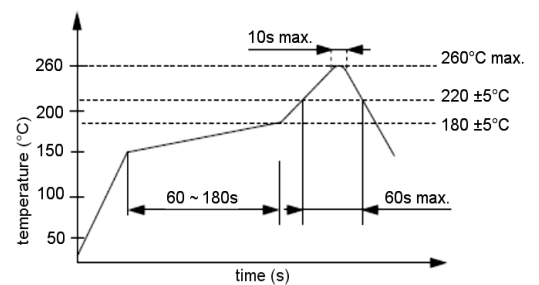


PIN	Connection
1	VC
2	GND
3	OUTPUT
4	V _{DD}

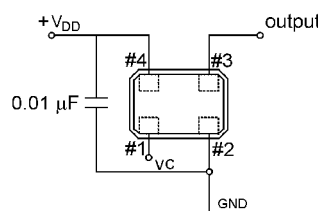
Suggested soldering pad:



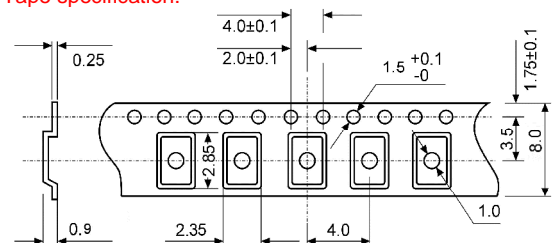
Reflow soldering condition:



Test circuit:



Tape specification:



reel diameter 180 mm