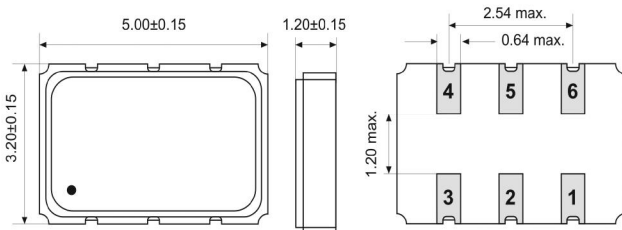


## PECL Positive Emitter Coupled Oscillator SMD-version +2.5 V / +3.3 V

part no.	12.xxxxx
model	KXO-68
frequency range	25.0 ~ 180.0 MHz
frequency stability over all conditions	±100 ppm = KXO-68A ±50 ppm = KXO-68B ±25 ppm = KXO-68D
operating temperature range	standard -20°C ~ +70°C available -40°C ~ +85°C
storage temperature	-55°C ~ +125°C
supply voltage	-0.5 V to +7.0 V
input voltage	+2.5 V DC ±5 % or +3.3 V DC ±5 %
input current (Pin#1=Open or VIH) max.	90 mA
start up time (max.)	10 ms
symmetry	40 % ~ 60 % (at crossing point)
rise and fall time max.	1.0 ns (20 % ~ 80 % of amplitude)
disable delay time max.	100 ns
enable delay time max.	10 ms
"0" level max.	V <sub>DD</sub> to +1.62 V DC
"1" level min.	V <sub>DD</sub> to +1.025 V DC
output load	50 Ohm (V <sub>DD</sub> to +2.0 V)
stand-by control voltage	VIH: +0.7 V <sub>DD</sub> min. VIL: +0.3 V <sub>DD</sub> max.*
stand-by current (Pin#1=VIL) max.	100 µA
phase jitter (12 kHz to 20 MHz band) max.	1 ps RMS
typical phase noise	-70 dBc/Hz at 10 Hz -105 dBc/Hz at 100 Hz -130 dBc/Hz at 1 kHz -145 dBc/Hz at 10 kHz -145 dBc/Hz at 100 kHz -145 dBc/Hz at 1 MHz
contents of reel	1000 pcs.

\* Internal crystal oscillation to be halted (Pin#1=VIL).

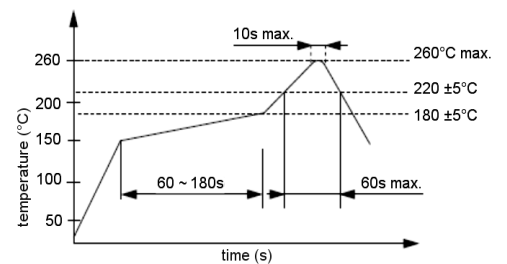
### Dimensions (mm):



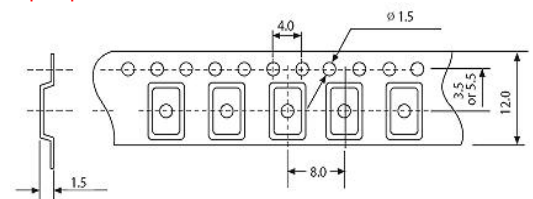
Pin	Connection
1	Tri-state*
2	NC
3	GND
4	Output
5	C-Output
6	V <sub>DD</sub>

\*enable high

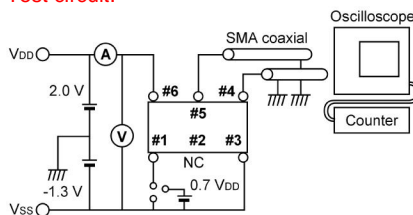
### Reflow soldering condition:



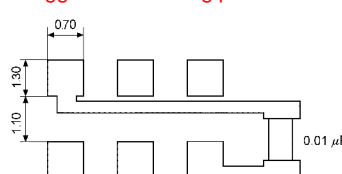
### Tape specification:



### Test circuit:



### Suggested soldering pad:



Note:  
A capacitor of value 0,01µF and 10µF between V<sub>DD</sub> and GND is recommended.

reel diameter 180 mm