

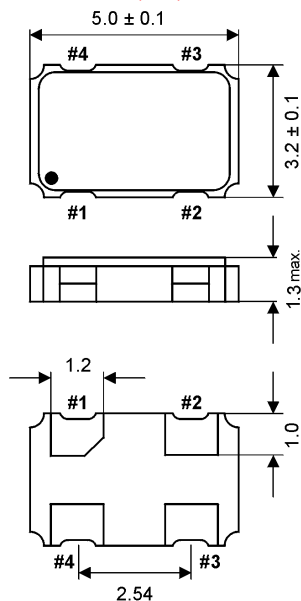


SSO Spread Spectrum Oscillator

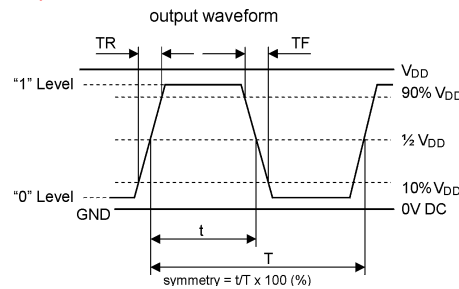
SMD-version

part no.	12.xxxxx			
model	KXO-56T			
frequency range	13.0 ~ 160.0 MHz			
frequency stability (parameter excludes modulation)	±20 ppm, ±50 ppm, ±100 ppm			
operating temperature	-40° ~ +85°C			
storage temperature	-55° ~ +125°C			
symmetry (duty)	40% ~ 60%			
spread type	C1	C2	C3	C4
center spread %	±0.125; ±0.25; ±0.375; ±0.5	±0.625; ±0.75; ±0.875; ±1.0	±1.125; ±1.25; ±1.375; ±1.5	±1.625; ±0.75; ±1.875; ±2.0
spread type	D1	D2	D3	D4
down spread %	- 0.25; - 0.5; -0.75; - 1.0	- 1.25; - 1.5; -1.75; - 2.0	- 2.25; - 2.5; -2.75; - 3.0	- 3.25; - 3.5; -3.75; - 4.0
output rise & fall time max.	10 ns			
high output voltage min.	0,9 V _{DD}			
low output voltage max.	0,1 V _{DD}			
supply voltage V _{DD}	+3.3V ±10%			
supply current max.	40 mA			
supply voltage	-2.5V ~ +3V DC			
output load	CMOS 15 pF			
oscillation start up time max.	10 ms			
period jitter max.	100 ps			
contents of reel	1000 pcs.			

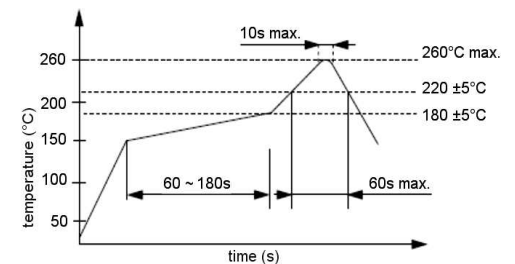
Dimensions (mm):



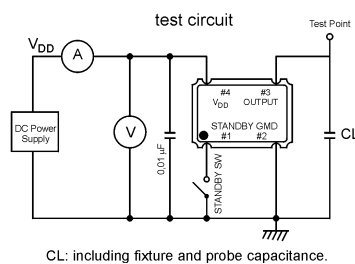
Output waveform:



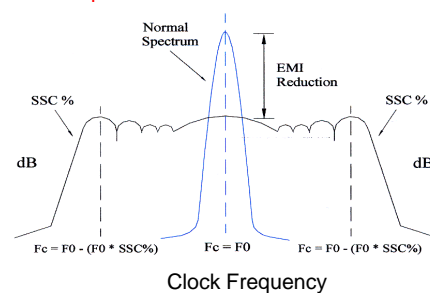
Reflow soldering condition:



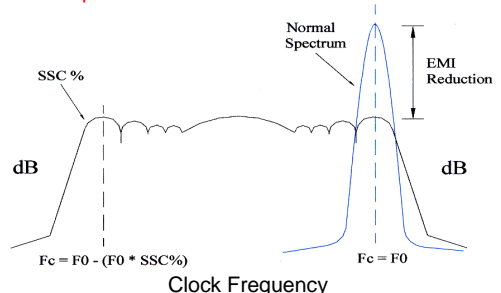
Test circuit:



Center Spread:



Down Spread:



PIN	Connection
1	"L"(0V) "H" or OPEN
2	GND
3	Z OUTPUT
4	V _{DD}

Z= High Impedance

Suggested soldering pad:

