



## VCTCXO clipped sine wave

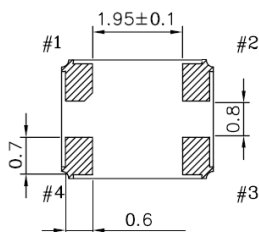
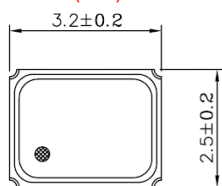
SMD-version

+3.3V

Voltage Controlled Temperature Compensated Crystal Oscillator

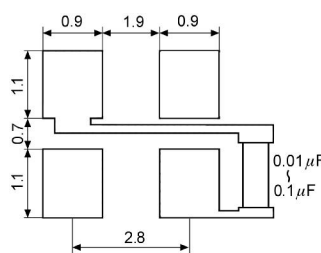
part no.	12.97460	
model	KXO-84	
frequency	38.40 MHz	
initial frequency tolerance max.	±1.5 ppm	
frequency stability	vs. temp.range	±1.5 ppm over -40°C ~ +85°C (referred to +25°C)
	vs. input voltage	±0.3 ppm at V <sub>DD</sub> ±5%
	vs. load max.	±0.2 ppm
	vs. aging max.	±1 ppm / year at +25°C
output	load	10k Ohm ±10% // 10pF ±10%
	voltage min.	0,8Vp-p at 10 k Ohm // 10 pF
	waveform	clipped sine wave
operating temperature range	-40°C ~ +85°C	
storage temperature	-40°C ~ +85°C	
supply voltage range	+1.6V ~ +3.6V	
input voltage V <sub>DD</sub>	+3.3V DC ±5%	
input current max.	1.5 mA (no load)	
start-up time max.	3 ms	
harmonics max.	-5.0 dBc	
frequency control voltage (VC)	½ V <sub>DD</sub> ±1V DC	
frequency adjustment (pullability) max.	±9 ppm ~ ±15 ppm	
phase noise max.	-50 dBc/Hz at 1 Hz -80 dBc/Hz at 10 Hz -110 dBc/Hz at 100 Hz -130 dBc/Hz at 1 kHz -145 dBc/Hz at 10 kHz -145 dBc/Hz at 100 kHz	
contents of reel	1000 pcs.	

**Dimensions (mm):**

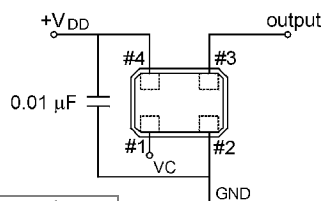


Pin	Connection
1	VC
2	GND
3	OUTPUT
4	V <sub>DD</sub>

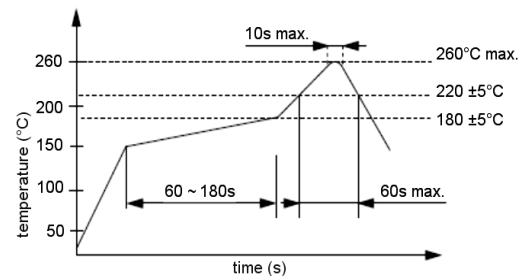
**Suggested soldering pad:**



**Test circuit:**



**Reflow soldering condition:**



**Tape specification:**

