



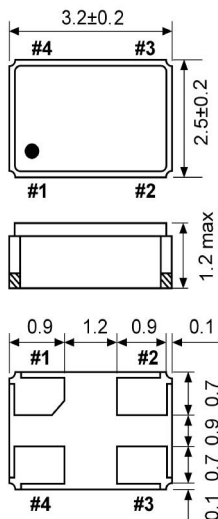
Clock Oscillator SMD-version

+3.3V

| | |
|-------------------------------------|--|
| part no. | 12.95009 |
| model | KXO-V96 |
| frequency | 32.0 MHz |
| frequency stability -20° ~ +70°C | ±50 ppm |
| operating temperature | -20° ~ +70°C |
| storage temperature | -50° ~ +125°C |
| symmetry | 40% ~ 60% at 50% V _{DD} level |
| rise & fall time max. | 5 ns (10% V _{DD} ~ 90% V _{DD} level) |
| "0" level max. | VOL: 10% V _{DD} |
| "1" level min. | VOH: 90% V _{DD} |
| input voltage V _{DD} | +3.3V ±5% |
| stand-by control voltage (pin#1) | V _{IH} (min): 70% V _{DD} V _{IL} (max): 30% V _{DD} * |
| supply voltage | -0.5V ~ +7.0V |
| input current | 6.0 mA typ., 11.0 mA max (pin #1=Open or V _{IH}) |
| output load max. | 15pF (HCMOS) |
| start up time max. | 10 ms |
| disable delay time max. | 150 ns |
| enable delay time max. | 10 ms |
| stand by current max.* | 50 µA (Pin #1=V _{IL}) |
| jitter | deterministic jitter 5ps max. random jitter 7ps max. norm 1-sigma 7ps max. peak to peak 40ps max. |
| contents of reel | 1000 pcs. |

* Internal crystal oscillation to be halted (pin#1=V_{IL})

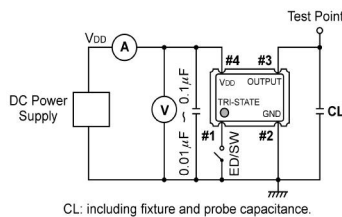
Dimensions (mm):



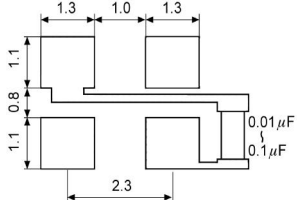
| PIN | CONNECTION |
|-----|-----------------|
| 1 | "L" OPEN or "H" |
| 2 | GND |
| 3 | Z OUTPUT |
| 4 | V _{DD} |

Z: high impedance

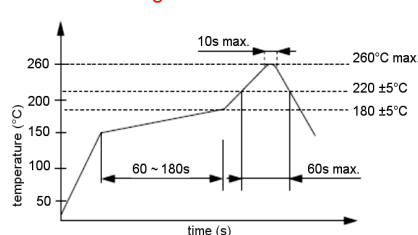
Test circuit:



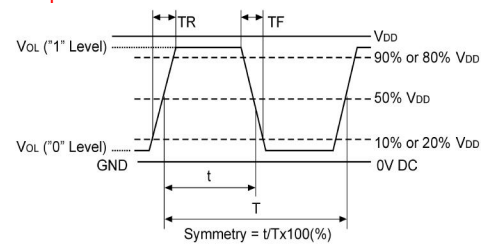
Suggested soldering pad:



Reflow soldering condition:



Output waveform:



Tape specification:

