



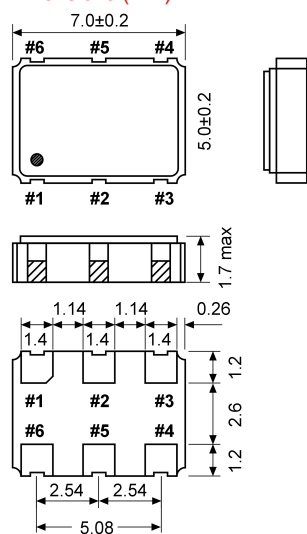
PECL Positive Emitter Coupled Oscillator

SMD-version

part no.	12.xxxxx
model	KXO-67
frequency range	50.0 ~ 212.50 MHz
frequency stability over all conditions	±100ppm = KXO-67A ± 50ppm = KXO-67B ± 25ppm = KXO-67D
operating temp.range	standard -20°C ~ +70°C available -40°C ~ +85°C
storage temp.range	-50°C ~ +125°C
supply voltage	-0.5V to +7.0V
input voltage	+2.5V DC ±5% or +3.3V DC ±5%
input current (Pin#1=Open or VIH) max.	90 mA max.
start up time max.	10 ms
symmetry	40% ~ 60% (at crossing point)
rise and fall time max.	0.8 ns (20% ~ 80% of amplitude)
disable delay time max.	100 ns
enable delay time max.	10 ms
"O" level max.	V _{DD} to +1.63V
"1" level min.	V _{DD} to +1.02V
output load	50 Ohm (V _{DD} to +2.0V)
stand-by control voltage	VIH: +0.7V _{DD} min. VIL: +0.3V _{DD} max.*
stand-by current (Pin#1=VIL) max.	100 µA
phase jitter (12 kHz to 20 MHz band) max.	RMS: 1 ps
typical phase noise	-70 dBc/Hz at 10 Hz -105 dBc/Hz at 100 Hz -130 dBc/Hz at 1 kHz -145 dBc/Hz at 10 kHz -145 dBc/Hz at 100 kHz -145 dBc/Hz at 1 MHz
contents of reel	1000 pcs.

* Internal crystal oscillation to be halted (Pin#1=VIL).

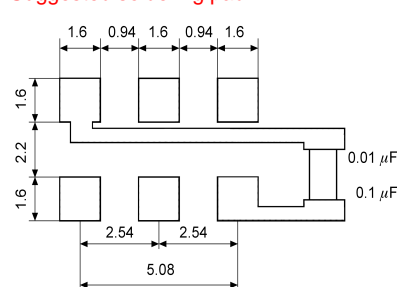
Dimensions (mm):



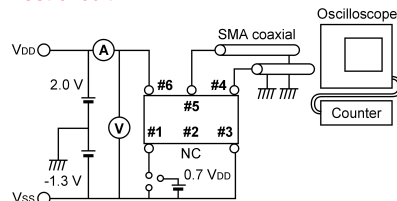
Pin	Connection
1	Tri-State
2	NC
3	GND
4	Output
5	C-Output
6	V _{DD}

*enable high

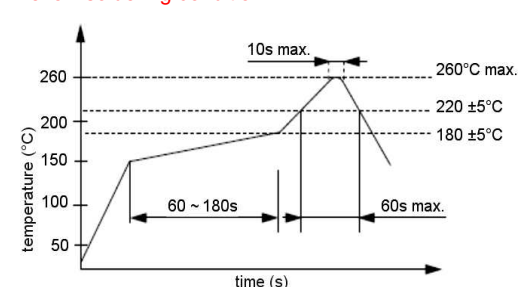
Suggested soldering pad:



Test circuit:



Reflow soldering condition:



Tape specification:

