



## Clock Oscillator

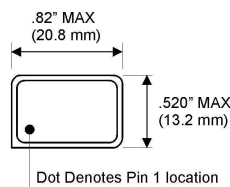
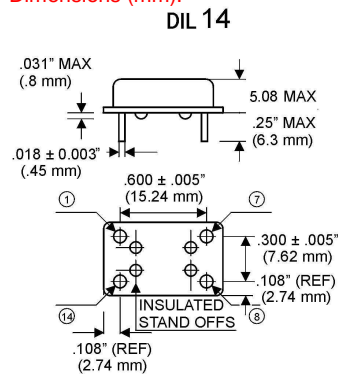
+5.0V

TTL / HCMOS

part no.	12.xxxxx
model	KXO-200
package	DIL 14
frequency range	0.5 ~ 100 MHz*
frequency stability	standard ±100 ppm available ±25 ppm ~ ±100 ppm
operating temperature range	standard -20°C ~ +70°C available -40°C ~ +85°C (=KXO-205)
storage temperature range	-55°C ~ +125°C
input voltage	+5.0V DC ±10%
input current max.	20mA 0.5 ~ 20MHz 40mA 20.1 ~ 70MHz 60mA 70.1 ~ 100MHz
symmetry	standard 60/40% at ½ VDD available 55/45% at ½ VDD
rise and fall time max.	10 ns 0.5 ~ 25 MHz 6 ns 25.1 ~ 70 MHz 4 ns 70.1 ~ 100 MHz
"0" level max.	+0.5V (10%V <sub>DD</sub> )
"1" level min.	+4.5V (90%V <sub>DD</sub> )
output load	1 – 8 TTL or CL = 50 pF typ.
logic family	TTL or HCMOS compatible
packing unit	25 pcs.

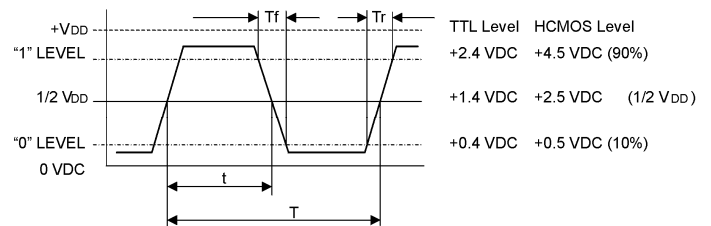
\* > 100 MHz on request

### Dimensions (mm):

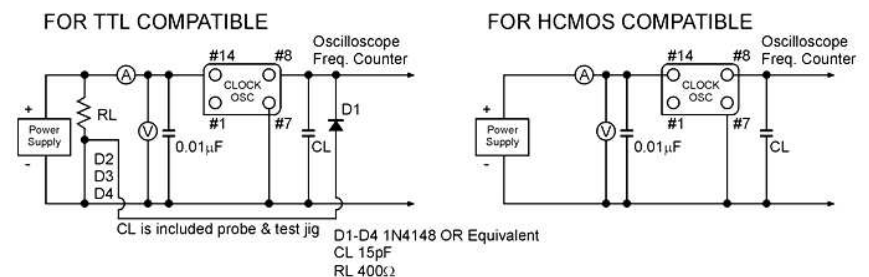


### Waveform:

Symmetry  
 $\frac{t_f}{T} \times 100\%$   
 $t_f$ : 40% min. to 60% max.



### Test circuit:



PIN	CONNECTION
#1 (#1)	N/C
#7 (#4)	GND
#8 (#5)	OUTPUT
#14 (#8)	V <sub>DD</sub>