



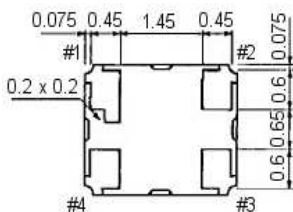
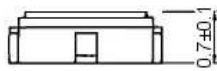
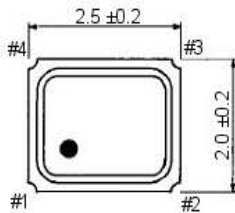
TCXO clipped sine wave

SMD-version +2.5 / +2.8 / +3.0V

Temperature Compensated Crystal Oscillator

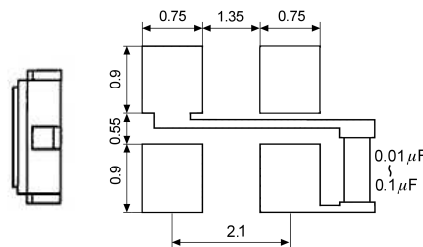
part no.	12.xxxxx	
model	KXO-86	
frequency range	13.0 ~ 40.0 MHz	
initial frequency tolerance max.	±1.5ppm	
frequency stability	vs. temp.range	±2.5 ppm over -30°C ~ +75°C (referred to +25°C)
	vs. input voltage	±0.2 ppm at V _{DD} ±5%
	vs. load max.	±0.2 ppm
	vs. aging max.	±1.0 ppm / year at +25°C
output	load	10k Ohm ±10% // 10pF ±10%
	voltage min.	0.8Vp-p at 10 k Ohm // 10 pF
	waveform	clipped sine wave
operating temperature range	-30°C ~ +75°C	
storage temperature range	-40°C ~ +85°C	
supply voltage range	1.6V ~ 3.6V	
input voltage V _{DD}	+2.5V DC ±5%, +2.8V DC ±5% or +3.0V DC ±5%	
input current max.	1.5 mA (no load)	
start-up time max.	3 mS (V _{out} ≥ 90%V _{p-p}) 4 mS (within ±2.5ppm)	
phase noise max.	-80 dBc/Hz at 10 Hz -110 dBc/Hz at 100 Hz -130 dBc/Hz at 1 kHz -145 dBc/Hz at 10 kHz -150 dBc/Hz at 100 kHz -150 dBc/Hz at 1 MHz	
contents of reel	2000 pcs.	

Dimensions (mm):

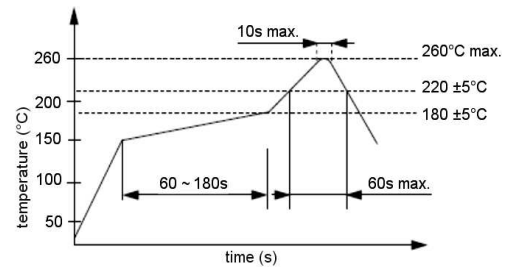


PIN	Connection
1	GND
2	GND
3	OUTPUT
4	V _{DD}

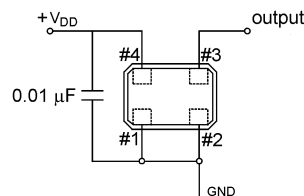
Suggested soldering pad:



Reflow soldering condition:



Test circuit:



Tape specification:

